

wo-ven

TOUCAN-T
carpet manufacture

wo-ven

Inspired by weaving techniques of traditional craftsmanship, the flat weaves of our **wo-ven** collection have been reduced to the essentials: the warp running out lengthways and the crossways stretching weft. The results are the pronounced 3D surface structures that convince with their reduced clarity. The nuanced colour palette and light melange of the yarn enhance the technically reduced look.

wo-ven Teppichböden aus hochwertigen Polyamid Hightech-Fasern sind extrem strapazierfähig und damit optimal geeignet für hochfrequentierte Bürokonzepte.

Optional kann **wo-ven** mit unserem **Akustikrücken T-SONIC** ausgestattet werden, so optimieren wir die akustischen Eigenschaften des Bodens und verbessern zudem den Gehkomfort.

MicroWeb ist ab 100 m² auch als SL Fliese lieferbar, wir beraten Sie gerne zu Details.

*Inspired by the weaving techniques of traditional craftsmanship, the flat weaves of our **wo-ven** collection have been reduced to the essentials: the warp running out lengthways and the crossways stretching weft. The results are the pronounced 3D surface structures that convince with their reduced clarity. The nuanced colour palette and light melange of the yarn enhance the technically reduced look.*

***wo-ven** carpets made of high-quality polyamide high-tech fibres are extremely hard-wearing and therefore ideally suited for highly frequented office concepts.*

*Optionally, **wo-ven** can be equipped with our acoustic back **T-SONIC**, in order to optimize the acoustic properties of the floor and to also improve the walking comfort.*

MicroWeb is also available as a SL tile from 100 m², we are happy to provide you with details.



EcoSteady 1050



EcoSteady 1051



EcoSteady 1052



EcoWeb One 1006



EcoWeb One 1007



EcoWeb One 1011



EcoWeb One 1012



CordWeb 1070



CordWeb 1071



CordWeb 1072



NetWeb 1080



NetWeb 1081



NetWeb 1082



NetWeb 1083



MicroWeb 1060



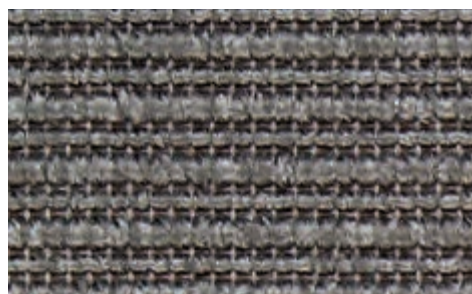
MicroWeb 1061



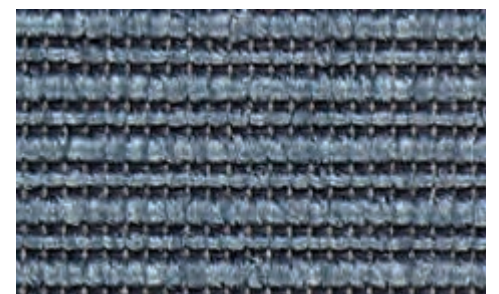
MicroWeb 1062



EcoWeb Two 1090



EcoWeb Two 1091



EcoWeb Two 1092



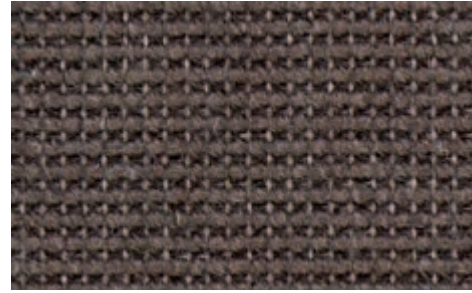
Strapazierwert	gewerblich stark (33) alt extrem
Komfortwert	LC 1
Herstellungstyp	gewebt
Verwendungsbereich	Stuhlrolle, Treppe
Nutzschicht	100 % Polyamid 6.6
Poleinsatzgewicht	750 g/m ²
Brandverhalten	Cfl-s1
Wear criteria	33 – heavy (extreme)
Comfort criteria	LC 1
Method of Production	woven
Application	Chair castors, stairs
Pile material	100 % polyamide 6.6
Pile weight	750 g/m ²
Fire behavior	Cfl-s1

Strapazierwert gewerblich stark (33) alt extrem
Komfortwert LC 1
Herstellungsart gewebt
Verwendungsbereich Stuhlrolle, Treppe
Nutzschicht 80% Wolle / 20% Polyamid
Poleinsatzgewicht 900 g/m²
Brandverhalten Cfl-s1

Wear criteria 33 – heavy (extreme)
Comfort criteria LC 1
Method of Production woven
Application Chair castors, stairs
Pile material 80% wool / 20% polyamide
Pile weight 900 g/m²
Fire behavior Cfl-s1



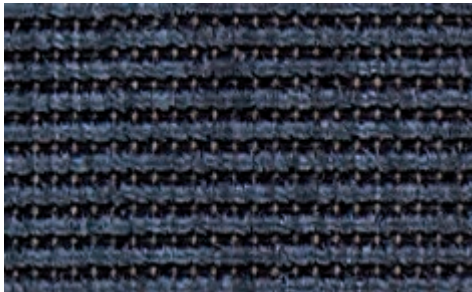
EcoSteady 1053



EcoSteady 1054



EcoSteady 1055



EcoWeb One 1009



Strapazierwert gewerblich stark (33) alt extrem
Komfortwert LC 1
Herstellungsart gewebt
Verwendungsbereich Stuhlrolle, Treppe
Nutzschicht 100 % Polyamid 6.6
Poleinsatzgewicht 750 g/m²
Brandverhalten Cfl-s1

Wear criteria 33 – heavy (extreme)
Comfort criteria LC 1
Method of Production woven
Application Chair castors, stairs
Pile material 100 % polyamide 6.6
Pile weight 750 g/m²
Fire behavior Cfl-s1



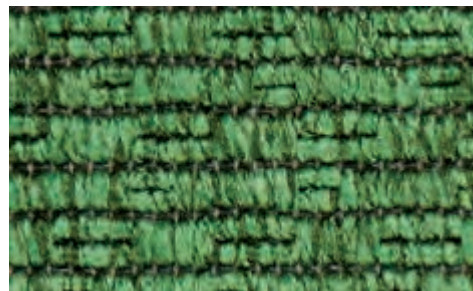
EcoWeb One 1003



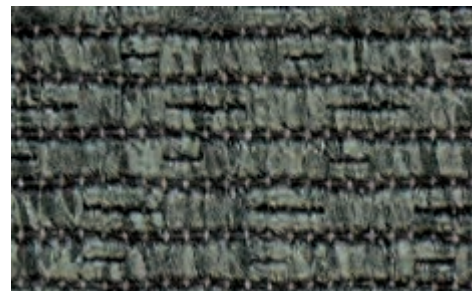
EcoWeb One 1002



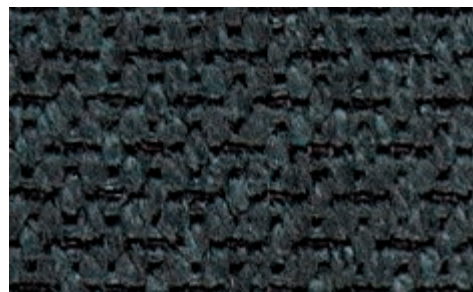
CordWeb 1073



CordWeb 1074



CordWeb 1075



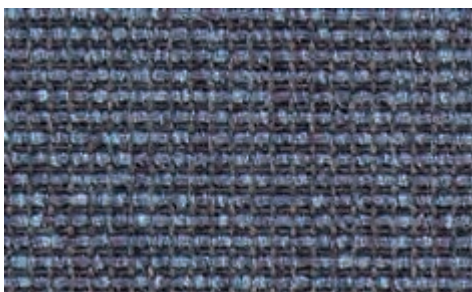
NetWeb 1084



NetWeb 1085



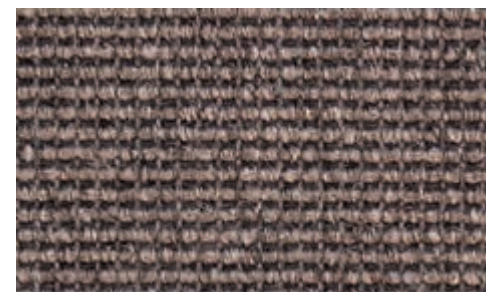
NetWeb 1086



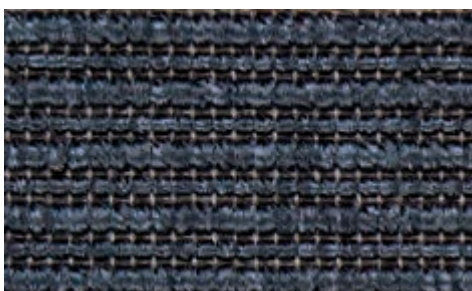
MicroWeb 1063



MicroWeb 1064



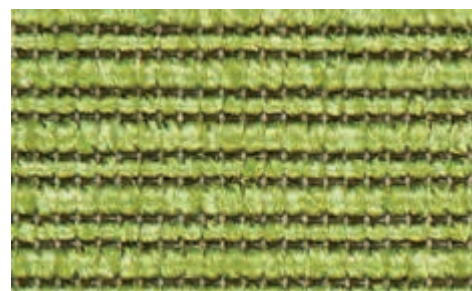
MicroWeb 1065



EcoWeb Two 1093



EcoWeb Two 1094



EcoWeb Two 1095



EcoWeb Two 1096





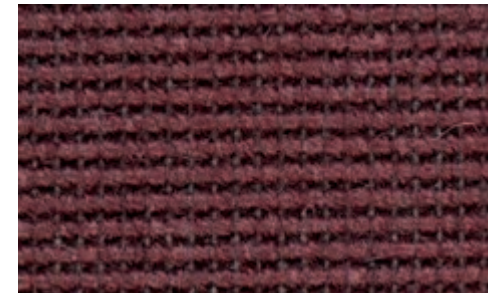
EcoSteady 1056



EcoSteady 1057



EcoSteady 1058



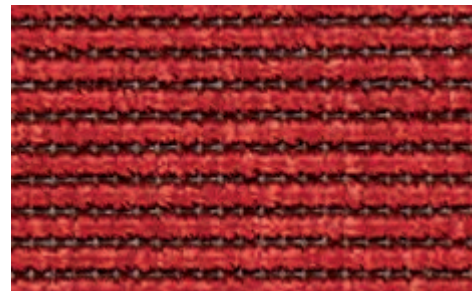
EcoSteady 1059



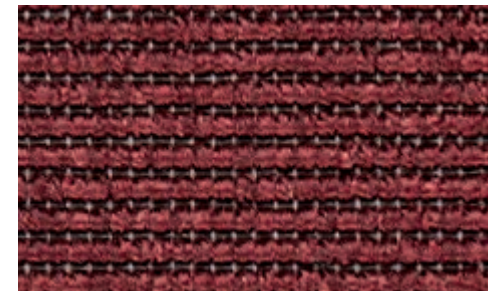
EcoWeb One 1008



EcoWeb One 1004



EcoWeb One 1001



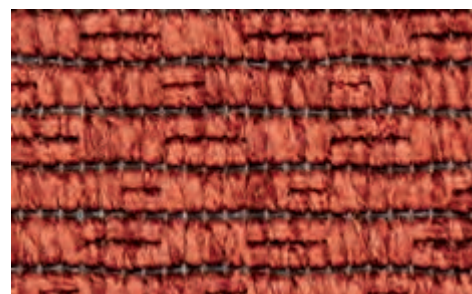
EcoWeb One 1013



CordWeb 1076



Strapazierwert	gewerblich stark (33) alt extrem
Komfortwert	LC 1
Herstellungsart	gewebt
Verwendungsbereich	Stuhlrolle, Treppe
Nutzschicht	100 % Polyamid 6.6
Poleinsatzgewicht	600 g/m ²
Brandverhalten	Cfl-s1
Wear criteria	33 – heavy (extreme)
Comfort criteria	LC 1
Method of Production	woven
Application	Chair castors, stairs
Pile material	100 % polyamide 6.6
Pile weight	600 g/m ²
Fire behavior	Cfl-s1



CordWeb 1077



CordWeb 1078



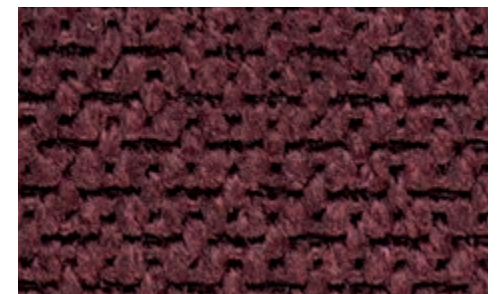
NetWeb 1087



NetWeb 1088



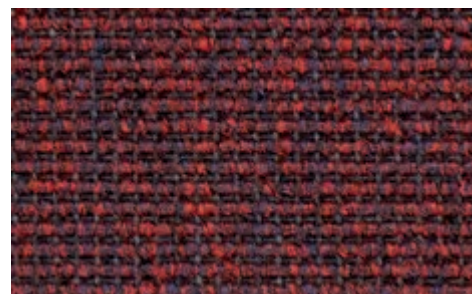
Strapazierwert	gewerblich stark (33) alt extrem
Komfortwert	LC 1
Herstellungsart	gewebt
Verwendungsbereich	Stuhlrolle, Treppe
Nutzschicht	100 % Polyamid 6.6
Poleinsatzgewicht	800 g/m ²
Brandverhalten	Cfl-s1
Wear criteria	33 – heavy (extreme)
Comfort criteria	LC 1
Method of Production	woven
Application	Chair castors, stairs
Pile material	100 % polyamide 6.6
Pile weight	800 g/m ²
Fire behavior	Cfl-s1



NetWeb 1089



MicroWeb 1066



MicroWeb 1076



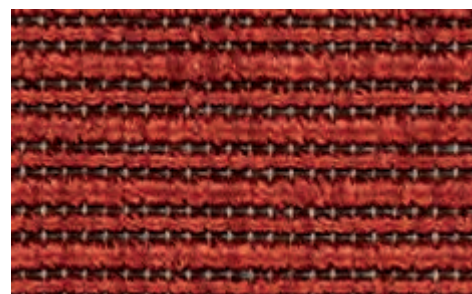
Strapazierwert	gewerblich stark (33) alt extrem
Komfortwert	LC 1
Herstellungsart	gewebt
Verwendungsbereich	Stuhlrolle, Treppe
Nutzschicht	100 % Polyamid solution dyed
Poleinsatzgewicht	400 g/m ²
Brandverhalten	Cfl-s1
Wear criteria	33 – heavy (extreme)
Comfort criteria	LC 1
Method of Production	woven
Application	Chair castors, stairs
Pile material	100 % polyamide solution dyed
Pile weight	400 g/m ²
Fire behavior	Cfl-s1



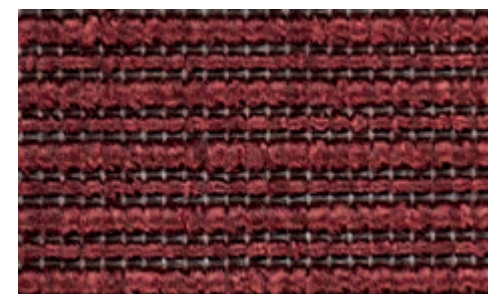
EcoWeb Two 1097



EcoWeb Two 1098



EcoWeb Two 1099



EcoWeb Two 1100



we dress architecture

TOUCAN-T
carpet manufacture

TOUCAN-T Carpet Manufacture GmbH · St. Töniser Str. 84 · 47803 Krefeld · Germany · fon + 49 (0) 2151 8419-0 · fax + 49 (0) 2151 8419-99
service@toucan-t.de · www.toucan-t.de